



**KOPANENG
SECURITY**

206 Waggel Street, La Montagne, Pretoria, 0181
Postal Address: 262 Kent Ave, Meyerspark, Pretoria, 0184
Cell: +27(0) 76 164 4080

andre@kopanengsecurity.co.za
www.kapanengsecurity.co.za

Dear Client,

Thank you for your enquiry about our control rooms.

We design, build, and install the control room from scratch, according to all SAIDSA standards.

There are 3 types of control rooms.

What would you need it for - CCTV/GAURDS/ARMED RESPONDS – or all 3.

Let me know if there is any specific specifications or requirements that we need to take into consideration. We build and design it according to your needs.

If you already do have a premises in mind or if it will be an expansion on your current business premises. Please specify the size and number of operators you are looking at.

Where are you situated?

I attached a few examples of what we have done already and some of the equipment we use.

There are more photos, but these will give you some ideas.

Some clients need big and some clients need small, every client is different.

To arrange a meeting is always better.

On radios, most radios are PTT these days and it is not necessary to build the high towers anymore.

Hope to hear from you soon.

Kind Regards,

Andre van der Westhuizen

CEO

T: 076 164 4080

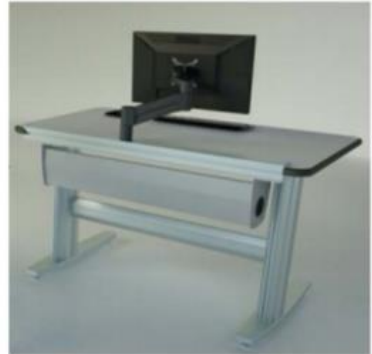
www.kopanengsecurity.co.za

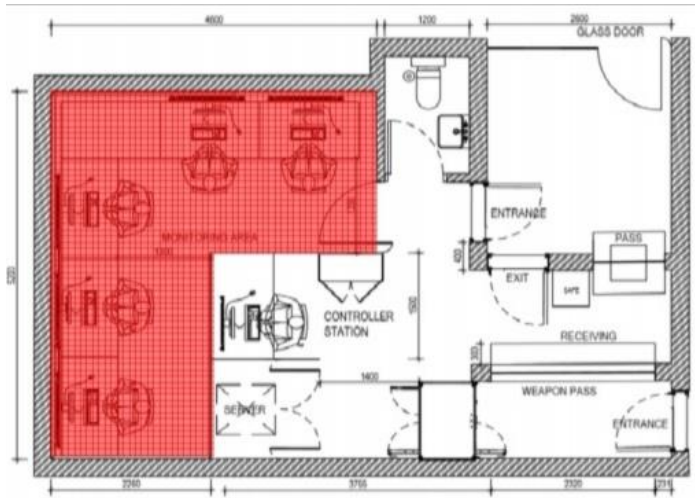
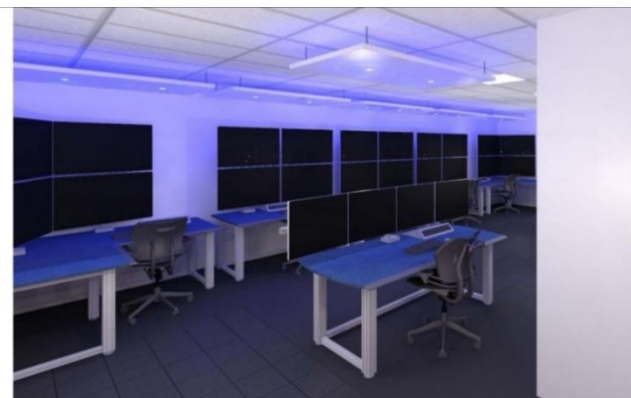
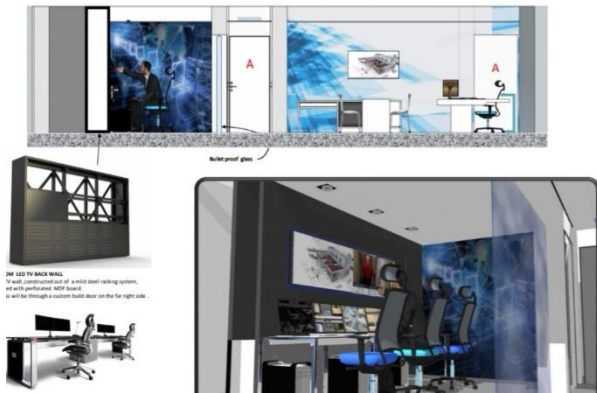
Kopaneng Security (Pty) Ltd

Reg. No: 2020/018944/07



SmartTrac ST3E-WS-LT
standard core / 10" height





Linked Consoles – Overview

SmartTrac Consoles can be "Linked" together to create multi-operator workstations. Available with an open "turret well" that accepts optional modular components such as equipment turrets and desktop inflits, or with continuous uninterrupted desktops.

Just like standard SmartTracs, our linked consoles feature a cable + power management compartment (core) and a continuous rear device track. With optional transitions all of the cable/power cores can be linked for through cabling from one end to the console to the other.

SmartTrac standard and mini cable cores can also be ordered in custom widths of 1.5 and 2.5 bays to better meet multiple and larger monitor operator position requirements.

Linked consoles will accept most SmartTrac accessories (p.9-10), such as monitor and speaker mounts, turrets and inflits, and rear doors. CPU holders can mount to the outside of end legs only, and the electric leg upgrade is limited to certain models, please call to discuss.

Typically, linked consoles will utilize standard SmartTrac legs with full-size feet at the ends, with shorter feet on intermediate legs for operator comfort, exceptions may apply on certain configurations as required.

Countertop finishes typically are laminate or linoleum with black bumper edge or upgraded to a Purtech (P) urethane edge. Acrylic or Corian (C) countertops are also available. Color suggestions can be found on the TBC website finishes page. Other finishes may be available by special request.

Typical examples of Linked Configurations:

The configurations shown here are just a small sampling of possible layouts that can be created with the SmartTrac Linked system. Please call to discuss your specific needs.

